

Wollongong high



PROSPECTUS

SCHOOL OF THE PERFORMING ARTS

Contents



Brief History	3
Principal's Message	5
About Us	6
School Structure	7
Performing Arts	8
Music	9
Drama	10
Dance	11
School Programs	12
Extra Curricular Activities	13
Sport	14
Careers	14
Wellbeing	15
School Uniform	16
Library	17
Key Dates	18
WHSPA Box Office	18



Brief history of WHSPA

Wollongong High School of the Performing Arts is a specialist co- educational, government secondary school offering exceptional educational opportunities to students across the Illawarra for over one hundred years. It has the twin goals of academic excellence and excellence in the Performing Arts.

Wollongong High School was founded in December 1916 at the Smith's Hill location after much pressure and lobbying from the local district citizens' association and the municipal council to the government.

In 1956 WHSPA was official opened in its new location in Lysaght Street, Fairy Meadow, by Hon. R.J. Heffron, Minister for Education.

WHSPA became a Performing Arts School in 1993. Now approximately 70% of the students enrolled at WHSPA have gained placement through the audition and workshop process. The school also enrolls students from local primary schools and students who have specifically applied to access the school's academic programs.

The Smith Street Unit is an annexe of WHSPA and offers a specialised learning and behaviour support environment for students.

WHSPA celebrated its Centenary in 2016.

Principal's Message

Welcome to Wollongong High School of the Performing Arts.

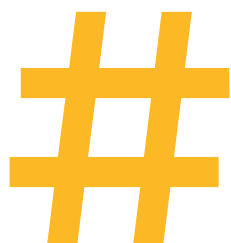
As Principal of this outstanding school, I have been very impressed with the pride our students take in their school, how engaged they are in their learning, how well they develop relationships with their teachers, and how enthusiastically they participate in the various aspects of school life. I feel extremely privileged to work with such an inspirational team of teachers and dynamic students.

With our twin goals of Academic Excellence and Excellence in the Performing Arts, our school is positioned to provide a dynamic learning environment with a strong focus on the development of the Performing Arts skills. We strive to offer an environment which values and respects honest effort, hard work, safety, tolerance, achievement and respect.

Our academic results in the HSC are amongst the strongest in the local area and our standards of artistic excellence are demonstrated time and time again. While academic achievement is a priority,

Wollongong High School of the Performing Arts offers so much more to our community. The size of our school affords a diverse range of opportunities both inside and outside the classroom. Our students continually strive to identify what they value, what they enjoy doing where their strengths lie. It is our goal to motivate every one of our students to be the very best that they can be and to inspire them to be life-long learners. We hope that this passion for learning stays with them throughout their lives.

Wollongong High School of the Performing Arts has an impressive history and an exciting future. The commitment of our teachers and the passion of our students will define that future. I look forward to welcoming you to our school.



in the State for
HSC Dance &
HSC Music Results

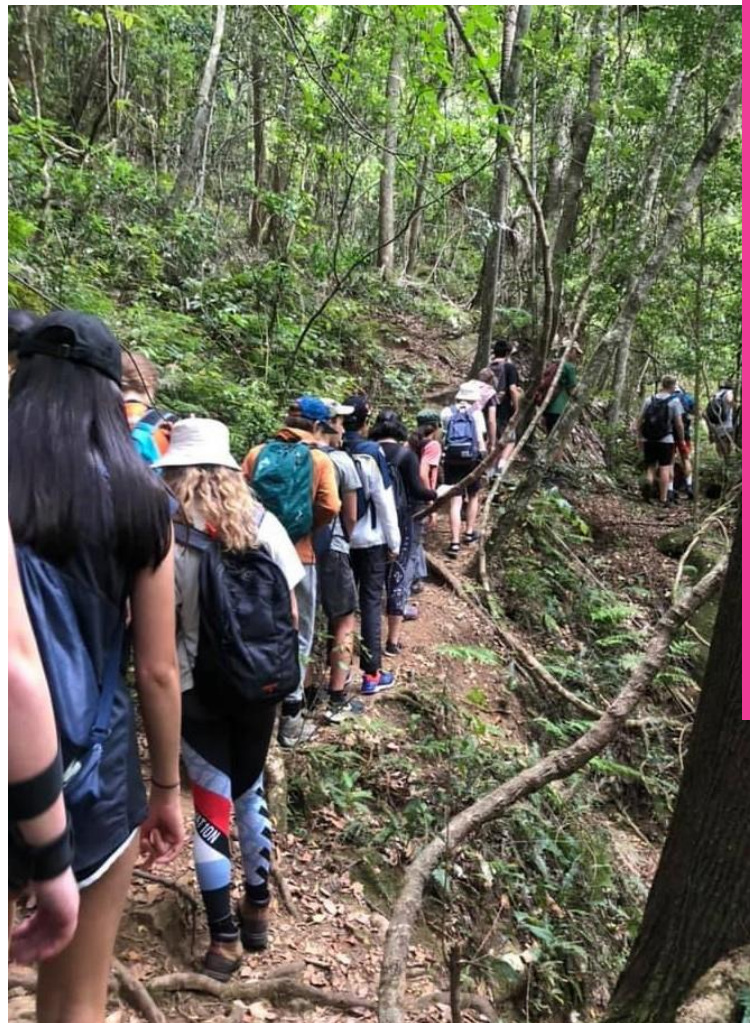
About Us



Wollongong High School of the Performing Arts offers a fully integrated academic and arts curriculum that focuses on excellence, providing quality teaching and learning. It is a culturally diverse, co- educational, high school that focuses on the arts in a specialised environment.

The twin goals 'academic excellence' and 'excellence in the performing arts' have succinctly summed up the school's purpose and focus for a number of years. However, the school provides much more than our highly regarded academic and performing arts programs. All students are encouraged to pursue their goals and are given every opportunity to achieve their full potential through a broad and flexible curriculum with an emphasis on quality teaching.

The school cultivates holistic wellbeing through the core values of safety, tolerance, achievement and respect which provide the basis for a dynamic and caring school.



OUR KEY OBJECTIVES AT WHSPA ARE TO FOSTER:

- Student Growth and Attainment
- Authentic Community Connections
- Inclusive School Culture



School Structure



PRINCIPAL	Paul Ryan	
DEPUTY PRINCIPALS	Kylie Wood	Bryce O'Connor
HSIE	History Geography Commerce Society & Culture Snr Geography Modern History	Business Studies Legal Studies Ancient History Economics Aboriginal Studies
LANGUAGES	French	Italian
PERFORMING ARTS	Dance - Audition & Elective Drama - Audition & Elective Dance Extension	Music 1 & 2 Music Extension Entertainment
VISUAL ARTS	Visual Arts Visual Arts Collective	Photography & Digital Medium
ENGLISH	English Advanced English Standard English Studies	English Extension 1 & 2ESL
TAS	Technology Information & Software Tech Textiles Technology Showtime Design Industrial Technology Timber Hospitality - Cookery	Hospitality - Multiskilling Construction Industrial Tech Timber Industrial Tech Multimedia Textiles & Design Information Processes & Tech
MATHEMATICS	Mathematics Standard 1 Mathematics Standard 2	Mathematics Advanced Mathematics Ext 1 & 2
SCIENCE	Biology Chemistry Physics Marine Studies	Earth & Environmental Science Investigating Science Science Extension
PDHPE	PDHPE CAFS	PASS SLR



Performing Arts



Wollongong High School of the Performing Arts specialises in the performing arts and is committed to excellence in student education by providing opportunities for students to pursue a high quality performing arts program. Students study curriculum developed by the NSW Education and Standards Authority (NESA) leading to the award of the record of School Achievement (ROSA) and the Higher School Certificate (HSC) that enhances the talents of its students. The school's comprehensive programs strive to instill discipline and self-esteem, and to encourage creativity, enabling students to develop to their fullest potential and to excel in their chosen endeavours.

Each year in Term 1 the school auditions students from all over NSW in Dance, Music and Drama for intakes in Years 7 and 11.

The school continues to enjoy a national and international reputation for excellence in the performing arts. The school enhances student motivation and achievement through learning support and well-being structures and programs, and by establishing close working relationships within the community.

The school is committed to excellence in student education by providing a challenging curriculum and a range of co-curricular and extra-curricular activities that enhance the talent of its students. Co-curricular programs are an extension of the curriculum in the performing arts. The school runs approximately 50 co-curricular activities with companies or ensembles in Dance, Music and Drama.

We have a proven level of success and have had many students go on to gain entry into Medicine, Architecture, Law, Teaching, Commerce, and Marine Science amongst other careers along with performing nationally and internationally in world- renowned companies including the Sydney Dance Company and the Ten Tenors and Bell Shakespeare Company.

KEY DATES:

Audition Applications for Year 6 into Year 7 are usually due in by March the year before your child plans on coming to the WHSPA.

Auditions/workshops are then usually held in March/April of that year.



Music



The Music faculty at WHSPA consists of a team of dedicated, passionate, talented and highly trained, specially selected music educators who are committed to increasing the opportunities available to students through the implementation of quality teaching within the curriculum and co-curricula programs. They are highly committed to technological innovation and adapting technology to suit student needs both in and beyond the classroom. Staff are involved in professional learning to ensure they are current with industry standards in musicology, performance and composition.

Music students at WHSPA are regularly selected for performances in the Schools Spectacular, The Talent Development Project, Southern Stars and Regional and State Ensembles. We also have a busy in-house calendar of events which allows all auditioned students to perform throughout the year in our state of the art theatre facility. We have established a professional working relationship with The Wollongong Conservatorium of Music and a number of industry professionals in the music business. These relationships enable us to further enhance the opportunities available to our students.

Entertainment Certificate III in Live Production, Theatre and Events is also offered by the Music faculty. This enables students to complete vocational training to support their music studies and future careers in theatre production. Our professionally equipped theatre allows students to operate industry standard equipment for our extensive performance calendar. We take pride in constantly refitting and updating our theatre space, ensure that students' knowledge remains current.

In our 7 to 10 Music programs, students engage in a wide range of performance, composition, aural and musicology learning experiences. Auditioned music students are provided with extended learning opportunities that challenge and develop their existing skills. All auditioned music students are supported by a personalised learning plan.

The Music faculty offers students the opportunity to specialise their interests and talents by providing the Music 1, Music 2 and Extension course as a separate class. This allows students to refine and develop their skills in an intensive and appropriate contextual setting. Senior students are closely mentored and supported by the Music staff in the formation and realisation of their HSC Music program, resulting in excellent HSC outcomes.



Students studying Music at WHSPA engage in an extensive co-curricular ensemble program. This program consists of seven core ensembles and eight extension ensembles exploring a wide range of vocal and instrumental repertoire. Industry professionals are employed to provide specialist tuition in a range of areas to provide extension opportunities for gifted and talented students.

Dance



The school runs a comprehensive parallel curricula and extra-curricular Dance program.

DANCE CURRICULUM

The study of dance as an artform in education is based on the study of three interrelated components: Performance, Composition and Appreciation.

STAGES 4 & 5

- Auditioned Year 7 Dance PA class continuing through to Year 12 with 2 to 3 period per week of Dance classes
- Year 7 Drama PA study Dance to develop movement and performance skills
- The Year 9 & 10 Dance Extension course is for any Dance PA student. The course runs in parallel to and builds on the PA Dance courses. It expands on the dance training and choreographic practices learned in the 7-10 Dance program through an additional 2 periods per week.
- All 8-10 students at the school can study the Dance Elective course for 2 periods per week.
- All Dance students work to obtain the ROSA

STAGE 6

- Year 11 & 12 Dance students study 3 periods per week for two years to obtain a HSC.

EXTRA-CURRICULAR DANCE PROGRAM

The school runs a comprehensive extra-curricular Dance Company, ensemble, workshop and excursion programs for gifted and talented Dance students. The emphasis of the program is to provide access to a variety of choreographers, dance styles, and performance events to build upon and supplement what skills are learned in class. In Years 7 – 12 all PA and Dance Elective students can nominate to participate in the Dance Company program.

We offer the following:

- Junior Company for 7-9 students
- Year 9 & 10 Dance Extension
- Senior Company for 10-12 students
- 3 style-specific Companies Ballet, Tap, Hip Hop
- Boys Ensemble
- Lighthouse Project Company
- Pre-professional Company
- One scholarship for a junior and senior student



All Dance Company students will be provided with performance opportunities in:

Dance Festival

Lighthouse Project

Pre-professional Company

Southern Stars

State Dance Festival

Year 12 HSC Composition dancer

The Schools Spectacular

Southern Stars Performing Company

NSW Public Schools State Companies

Southern Stars Touring Ensemble

Dance Showcase

Aboriginal Companies

Drama



The Drama program aims to extend students' learning and experience of Drama by providing a specialist platform whereby students can fine tune their dramatic ability in a series of timetabled classes embedded into the curriculum. Students are taught a range of performance styles and given access to theatre practitioners, and performance events to build upon and supplement what skills are learned in the classroom.

Our highly skilled Drama faculty are recognised state wide for their ongoing outstanding HSC results, knowledge of their craft and industry connections. The faculty aims to engage and challenge students to maximise their dramatic abilities and enjoyment of drama and theatre through making, performing and appreciating dramatic and theatrical works.

EDUCATIONAL & PROFESSIONAL OPPORTUNITIES

Through the audition process students may be offered a position in the following opportunities

WHSPA DRAMA PROGRAM

- Timetabled Drama technique classes in state of the art facilities
- Highly successful co-curricular program with performance opportunities showcased across the state
- Drama workshops accessing industry professionals sharing their collective passion for the arts
- Access to the Merrigong Gold Pass Program.
- Shakespeare Festival
- 90% of WHSPA Drama students achieving at band 5 or 6

DRAMA COMPANY PROGRAM

- In Years 7 – 12 all students can audition for a Drama core company position. These companies occur before and after school.
- Selection for all companies is through audition or workshops to take place in Term 1. Successful students focus on performance styles and practitioners each semester as directed by their company tutor.
- The aim is to provide a variety of performance opportunities for our company students. Students are often seen performing at Viva La Gong, Christmas Carols Fundraiser, Primary school performances, and Regional and State Drama Festival.

OPPORTUNITIES

- Regional and State Drama Festivals
- State Shakespeare Festival
- Award winning Theatre Sports Teams
- School Musical
- State of the art facilities
- Young Wharfies Program
- Access to performance psychologist
- Opportunity to work with international Directors and casting agents through AIPA
- Elite pathways to support students working in a professional capacity through a connected learning program
- Sydney Theatre Company work experience
- The Young Belvoir Theatre Club
- Griffin Ambassadors
- Merrigong Theatre Gold Pass
- Bells Shakespeare Scholarship



School Programs



VISUAL ARTS COLLECTIVE

The Visual Arts Collective is a selective, specialist class at WHSPA, with a dedicated focus on visual creativity and design. The Collective is part of the School's auditioned Gifted and Talented Students Program.

To get a place in the Collective, students are auditioned and have to demonstrate a natural aptitude, practical refinement and most importantly, a passion for the Visual Arts.

Over the four year program Collective members are offered extension programs in all forms of Visual Arts media including drawing, painting, sculpture, ceramics, photography, graphic design and printmaking. Their studio practice is reinforced with intensive art history and theory lessons, an annual photography prize and short film night.

Students are also offered practical extension lessons with trained artists. Collective members also benefit from frequent art excursions, exhibitions, studios and museum tours.

Many of the graduating Collective class will chose to study Visual Arts for their HSC, and this program has assisted them in setting up partnerships with the Visual Arts community.



ACADEMICALLY GIFTED CLASS (G7)

This class has been designed to bring like-minded students together to extend their capabilities. Students are invited to sit the test prior to commencing Year 7 at WHSPA.

Students are tested in three areas; numeracy, literacy and their ability to engage in problem solving. Students will be given the opportunity to be placed in class at the conclusion of every year, as all positions will be reviewed and the school will analyse school based data to determine student placement.

HOMEWORK CLUB

Homework Centre is held on Monday's from 2:10-3:10pm in the Library. Students can use this time to gain assistance with assignments or to complete their homework and revise for upcoming assessment tasks.



BYOD

BYOD is a strategy whereby students will be able to bring a familiar personal electronic device to school to use as their primary technology source. The school can provide the ability to connect compatible devices to a filtered internet service.

IT SUPPORT

IT Support is located in the Library, and is available everyday, all day. The school will provide access to a filtered Wi-Fi internet service. Limited support service for student laptops will be provided by the school.

Extra Curricular Activities



NSW LAW SOCIETY MOCK TRIAL COMPETITION

The Law Society of New South Wales' Mock Trial competition has been running since 1981. It is open to schools across NSW for students in years 10 and 11. The program aims to introduce students to the NSW judicial system by providing practical experience into the running of a court case in a true-to-life adversarial setting. Students learn advocacy, debating and problem-solving skills.

WHSPA has been entering the competition for over 20 years. We've had teams successfully reaching quarter finals, placing us in the top 15 schools out of 260 schools in the state.

WHSPA Mock Trial team travelled to New York to take part in the Empire City International Trial competition. Our team placed 10th and was the best international team and received an honourable mention for outstanding participation, and one of our witnesses was awarded equal 1st place out of 60 witnesses.

THEATRE SPORTS

Theatresports® Schools Challenge is the only schools drama competition in NSW! Teams of 3-5 students from each school create 1, 2 and 3 minute improvised scenes live on stage. It increases the students' confidence, listening skills and teamwork, as well as strengthening their problem solving abilities and creative thinking, all in a hilarious, fun and supportive environment. WHSPA Seniors team won the whole competition in 2016, with the Juniors coming 4th. And in 2017 our Intermediate team came 4th in the Grand Final.

DUKE OF EDINBURGH CHALLENGE

The Duke of Edinburgh's Award encourages young people to take on a challenge and find their true potential. It is open to 14-25 year olds, regardless of their background. It comprises of three levels, Bronze, Silver and Gold. Participants are required to complete four sections of each level: Service, Physical Recreation and Adventurous Journey.



Other Extra Curricular Activities

Southern Stars | Young Wharfies (Sydney Theatre Company) Griffin Ambassadors Program | Shakespeare Carnival | Young Belvoir Theatre Club | Spelling Bee | Market Day | Youth Frontiers Competitions—Unis, eg: Maths | Golden Gong Awards (film comp) Annual Photography Prize | Links 2 Learning Football/Basketball/Netball/Rugby Cricket/Touch Football/Aussie Rules

Sport



The School Recognises that besides contributing to the healthy physical growth of adolescents, team games and organised sport are of great value in the development of qualities such as school spirit, leadership, loyalty and initiative. Consequently every encouragement is given to students at WHSPA to take part in sporting activities.

The school has its own oval, cricket practice wickets, athletics equipment and netball and basketball courts. Teams are entered in various inter-school sporting competitions and swimming, athletics and cross-country carnivals are a popular feature of the school calendar. Participation in combined high school competitions is also possible.

Within the school sports carnivals, competition is conducted between the houses - Bombora, Dharawal, Belmore and Flame - named after important and significant indigenous landmarks in the Illawarra.

Our school has had great success when competing in the NSW Combined High schools knockout competitions including sports such as cricket, netball basketball, AFL and Soccer.



Careers

WHSPA has a comprehensive careers guidance and advisory program. Students are actively encouraged to use a variety of resources including the wollongonghscareers website as well as the myfuture and JobJump career websites. Students are strongly encouraged to participate in work experience in Year 10 and in other years as needed. Students are also able to participate in vocational education training (VET) courses which can be either internally or externally delivered. WHSPA also encourages and supports students who are school based apprentices/trainees (SBATs).

The Career Adviser and Transition Officer work together to support students in clarifying and pursuing their post-school options through involvement in programs such as Positive Futures, YES (Youth Engagement Strategy—TAFE) and Meeting Career Goals.

Students in their senior school years can participate in a wide range of courses and opportunities. These include participating in vocational driven pathway whereby students have the opportunity to gain at least two nationally recognised qualifications. Students can also follow a more traditional ATAR pathway of study.

Other Career Programs:

NRLS2W

School to Work Careers Expo

Trades Show

Taste of TAFE

UOW Discovery Day /
Summer Master Class WOW

Work Experience SBAT

EVET/VET

Wellbeing



The Wellbeing Team consists of: Principal, Deputies, Head Teacher Welfare Girls, Head Teacher Welfare Boys, Counsellors, Year Advisers, Learning Support Teacher.

The Department of Education is committed to wellbeing in schools. At WHSPA the Wellbeing Team is an integral part of the support system that is available to students, staff and parents in keeping with the twin goals of academic excellence and excellence in the performing arts.

The school has established 'The Hub' that caters for students who require assistance in a smaller and more supported environment. WHSPA adopts a holistic approach to education and understands that all staff members have a responsibility for the wellbeing of the students in their classrooms.

The Learning Support Team creates Personalised Learning and Support Plans (PLSP) in collaboration with the student, their parents/carers, as well as medical and education specialists. The team also provides a transition program for students from Year 6 into 7 with special learning and support needs, as well as managing and supporting post school transition programs for students at the end of their secondary schooling years.

The Hearing Support Unit exists to ensure maximum access to the mainstream curriculum for students who are deaf or hard of hearing. Through the development and implementation of personalised learning and support plans, students are provided with in-class support, individual or small group delivery of curriculum content where required. The Specialist Hearing Support Teacher works collaboratively with mainstream teachers to make suitable adjustments to class environments and assessment tasks, maximising the opportunity for students to succeed and gain independent work skills. SLSP in-class support provides access to the development of practical skills and note taking. All modes of communication (Auslan, Auditory-Oral) are available in the unit.



School Values

SAFETY
TOLERANCE
ACHIEVEMENT
RESPECT

MERIT SYSTEM

As teachers we take much pride in recognising students' efforts, attitudes and results. During the year this is formally recognised at a Certificate of Achievement ceremony held once per semester. There are steps students need to take before being eligible for such an award.

BULLYING

A child who feels safe, valued and happy is in the best position to gain maximum benefit from time spent in school. The NSW Department of Education rejects all forms of bullying. The WHSPA Anti-Bullying Plan outlines the processes for preventing and responding to student bullying in our school, and reflects the Bullying and Responding to Student Bullying Policy.

WHSPA values and respects honest effort, hard work, tolerance and diversity, and as a school community will work towards making our school a bully free zone.

School Uniform



School Uniform is compulsory.

The uniform consists of:

GIRLS

- White blouse with school emblem worn with black slacks, or tartan skirt
- Black tartan dress
- Black jumper or cardigan with school emblem.
- Full black enclosed leather lace shoes
- WHSPA school cap or hat

BOYS

- Junior: light green shirt with school emblem
- Senior: white shirt with school emblem
- Grey shorts or long grey pants
- Full black enclosed leather lace shoes
- WHSPA school cap or hat

PE/SPORT:

- WHSPA Sport shirt
- WHSPA Sport shorts or black tracksuit pants
- Dance / Drama / Music: See website for details

Please see our Uniform Policy on the School's Website for more detailed information.

WHSPA Uniforms are available at:

Pro Uniforms Corrimal

79 Collins St, Corrimal NSW 2518

Phone: 4283 4612

Poppets Direct / Crystal Bears

31 Montague Street, Fairy Meadow.

Phone: 4226 1611



Library



WHSPA Library is located on the top floor of D Block, above TAS. We have a lovely bright space for you to study or read. The library has a reading section, 30 student computers for study and research, quiet study carousels, two separate classroom sections, and lots of tables for study.

PROGRAMS RUN IN THE LIBRARY:

LIVING BOOKS

The 'Living Books' Program is run every year with Year 9 students. The 'books' are local residents from many walks of life, who are there to share their life experiences and life choices. Their backgrounds are diverse, in terms of culture, language and faith background, gender, sexuality, age, ability and occupation. 'Readers' (students) engage in a half hour conversation with a 'book' in a safe supported environment in the library. Questions and active participation in discussion are encouraged.

PREMIER'S READING CHALLENGE

All Year 7 students participate as part of their English reading time.

ACCELERATED READER PROGRAM

The program helps to monitor reading practice and progress. It also helps teachers guide kids to books that are on kids' individual reading levels.

AUTHOR VISITS

Local authors are often invited to speak with Year 7 students



OPENING TIMES

8:30am - 3:10pm Before school,
Recess and Lunch

SENIORS: Welcome during study periods

BORROWING:


Yr 7-10 - 3 books
Yr 11, 12 – 5 books

SERVICES:

- Photocopying
- Printing
- Binding
- Laminating

Website:

Tab on WHSPA Website

 WHSPAs in the Library

Key Dates



Expo night
Term 1

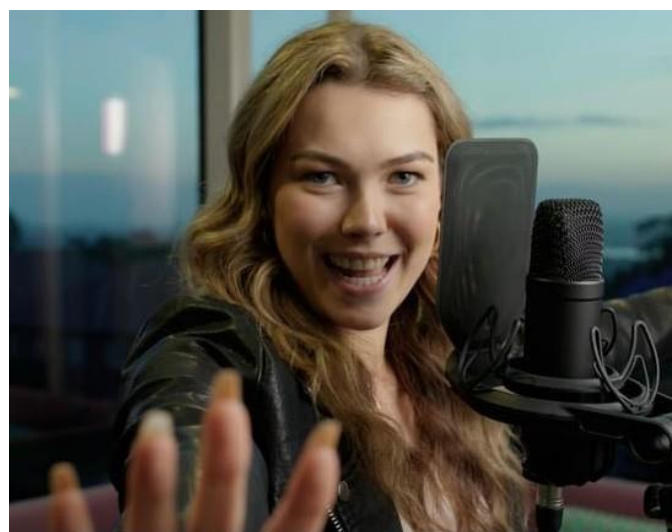
Report Dates
Term 2 + Term 4

Parent/Teacher Nights
Term 1 + Term 2

School Camp—Year 7
Term 1

WHSPAC Box Office

For all WHSPA shows, tickets can be purchased online from our online Box Office on our Website, or click on the QR code below:



Contact Us



Lysaght Street, Fairy Meadow

PO Box 222, Fairy Meadow, NSW 2519

Phone: 02 4229 6844

Fax: 02 4226 4128

wollongong-h.school@det.nsw.edu.au

www.wollongong-h.schools.nsw.edu.au



Parents and Citizens Association

The WHSPA Parents and Citizens Association (P&C) meets on the second Monday of each month.

The meetings start at 7:00pm and are held in the school Administration block.

All parents are welcome. Minutes of meetings are posted on WHSPA website.

